

## **DOWNLOAD ATOM SERVICES**

**Cadastral Parcel (CP)**

**Addresses (AD)**

**Buildings (BU)**

Version 1.0

July 2016

1	Description of ATOM Services.....	3
2	Metadatos de los servicios.....	3
3	Download ATOM services technical specifications.....	4
4	Access to the services.....	4
5	Download of the Datasets Descarga de los conjuntos de datos.....	6
6	Ejemples of download data.....	7



## 1 Description of ATOM Services

This document contains basic information about the download ATOM services of predefined datasets according to the INSPIRE specifications for themes Cadastral Parcels (CP) and Addresses (AD) of Annex I and for the theme buildings (BU) of Annex III.

## 2 Metadata of services

Metadata services are included in the service of catalogue of the Spanish Spatial Data Infrastructure IDEE (Infraestructura de Datos Espaciales de España).

Metadata for the ATOM Service of Cadastral Parcel

[http://www.idee.es/csw-inspire-idee/srv/spa/csw?SERVICE=CSW&VERSION=2.0.2&REQUEST=GetRecordById&outputSchema=http://www.isotc211.org/2005/gmd&ElementSetName=full&ID=ES\\_SDGC\\_CP\\_ATOM](http://www.idee.es/csw-inspire-idee/srv/spa/csw?SERVICE=CSW&VERSION=2.0.2&REQUEST=GetRecordById&outputSchema=http://www.isotc211.org/2005/gmd&ElementSetName=full&ID=ES_SDGC_CP_ATOM)

Metadata for the ATOM Service of Addresses

[http://www.idee.es/csw-inspire-idee/srv/spa/csw?SERVICE=CSW&VERSION=2.0.2&REQUEST=GetRecordById&outputSchema=http://www.isotc211.org/2005/gmd&ElementSetName=full&ID=ES\\_SDGC\\_AD\\_ATOM](http://www.idee.es/csw-inspire-idee/srv/spa/csw?SERVICE=CSW&VERSION=2.0.2&REQUEST=GetRecordById&outputSchema=http://www.isotc211.org/2005/gmd&ElementSetName=full&ID=ES_SDGC_AD_ATOM)

Metadata for the ATOM Service of Buildings

[http://www.idee.es/csw-inspire-idee/srv/spa/csw?SERVICE=CSW&VERSION=2.0.2&REQUEST=GetRecordById&outputSchema=http://www.isotc211.org/2005/gmd&ElementSetName=full&ID=ES\\_SDGC\\_BU\\_ATOM](http://www.idee.es/csw-inspire-idee/srv/spa/csw?SERVICE=CSW&VERSION=2.0.2&REQUEST=GetRecordById&outputSchema=http://www.isotc211.org/2005/gmd&ElementSetName=full&ID=ES_SDGC_BU_ATOM)

The main features of these download ATOM services, collecting in this metadata are as follows:

- **Completeness:** The INSPIRE dataset contains the official data of the DGC transformed directly to the data model defined by the INSPIRE directive, the dataset is complete including urban and rural areas for 95% of the territory under the responsibility of the DGC, (except the Basque country and Navarre).
- **Spatial Resolution:** the scales of production are, for urban areas 1: 1000 or higher and for rural areas 1:5000 or higher.
- **Conditions of access and use:** Access to these services shall be carried out under a license of transfer of rights to be obtained automatically, assuming its use the knowledge and acceptance of the access requirements and the terms of the license.
- **Updating:** The dataset which are provided by the ATOM services (by municipality) contains updated data until the date of generation of the corresponding file ATOM. The estimated frequency of generation of these files atom will be of 6 months.



### 3 Download ATOM services technical specifications

Data and services follow the specifications defined in the guidelines:

- [Draft Implementing Rules for Download Services version 3.1](#)
- [INSPIRE Data Specification on Cadastral Parcels - Guidelines version 3.0.1](#)
- [INSPIRE Data Specification on Addresses – Technical Guidelines 3.1](#)
- [INSPIRE Data Specification on Buildings – Technical Guidelines](#)

Data are obtained directly from the database of the General Directorate for cadastre and updated to the date of the download.

### 4 Access to the services

ATOM Service of Cadastral Parcel (CP):

<http://www.catastro.minhap.es/INSPIRE/CadastralParcels/ES.SDGC.CP.atom.xml>

ATOM Service of Addresses (AD):

<http://www.catastro.minhap.es/INSPIRE/Addresses/ES.SDGC.AD.atom.xml>

ATOM Service of Buildings (BU):

<http://www.catastro.minhap.es/INSPIRE/buildings/ES.SDGC.bu.atom.xml>

The ATOM services are files published in the network with a specific structure XML that the browsers identified as ATOMS. The file displays its contents with a style of its own that adds functionality to the service.

Not all browsers support this functionality. Internet Explorer does allow access by using a page which incorporates hyperlinks for download, in addition it has filtering options by text and sorting by date and title.

**Download service of Cadastral Parcels. Territorial Office**  
Lunes, 29 de febrero de 2016, 1:00:00

**Territorial office 02 Albacete**  
Lunes, 29 de febrero de 2016, 1:00:00

Urban and rurals Cadastral Parcels by municipalities:

**Municipalities**

- 02001-ABENGIBRE
- 02002-ALATOZ
- 02004-ALBATANA
- 02005-ALBOREA
- 02006-ALCADOZO

[ES.SDGC.CP.atom\\_02.xml](#)

**Territorial office 03 Alicante**  
Lunes, 29 de febrero de 2016, 1:00:00

Urban and rurals Cadastral Parcels by municipalities:

**Municipalities**

- 03001-ADSUBIA
- 03002-AGOST
- 03003-AGRES
- 03004-AIGUES
- 03005-ALBATERA

[ES.SDGC.CP.atom\\_03.xml](#)

**Mostrando** 52 / 52

• Todo 52

**Ordenar por:**

- Fecha
- Título

**Filtrar por categoría:**

Cadastral Parcels 52

[Ver propiedades de la fuente...](#)

Figure1: ATOM service of Cadastral Parcel in Internet Explorer

There are 2 levels of access to obtain the download of the data of a municipality.

The first access shows entries by each province and it includes a listing of the municipalities; the filter would allow search a municipality and show in which province is located.

**Download service of Cadastral Parcels. Territorial Office 02 - Albacete**

Está viendo una fuente cuyo contenido se actualiza con frecuencia. Las fuentes se agregan a la lista de fuentes comunes cada vez que se suscribe a ellas. La información actualizada en la fuente se descarga automáticamente en el equipo y se podrá consultar en Internet Explorer y en otros programas. [Obtener más información acerca de fuentes.](#)

[Suscribirse a esta fuente](#)

**02001-ABENGIBRE Cadastral Parcels**  
viernes, 19 de febrero de 2016, 1:00:00  
[A.ES.SDGC.CP.02001.zip](#)

**02002-ALATOZ Cadastral Parcels**  
viernes, 19 de febrero de 2016, 1:00:00  
[A.ES.SDGC.CP.02002.zip](#)

**02900-ALBACETE Cadastral Parcels**  
viernes, 19 de febrero de 2016, 1:00:00  
[A.ES.SDGC.CP.02900.zip](#)

**Mostrando** 87 / 87

• Todo 87

**Ordenar por:**

- Fecha
- Título

**Filtrar por categoría:**

Cadastral Parcels 87

Figure2: ATOM service of Cadastral Parcel, second level



## 5 Download of the Datasets Descarga de los conjuntos de datos

The download is a file in ZIP format that contains the data for each object in GML files, according to the specifications defined for the DGC INSPIRE data sets, plus a XML file with the metadata of the data downloaded.

Description of the ZIP files :

### A.ES. SDGC. CP.02001.zip

- A: current cartography
- ES: Spain
- SDGC: D. G. for cadastre
- CP: cadastral parcel, AD: address, BU: buildings.
- 02001: Cadastral Provincial office and Municipality

Contents of the ZIP file of cadastral parcel:

- A.ES. SDGC. CP. MD. 02001.XML: metadata file
- A.ES.SDGC.CP.02001.cadastralparcel.GML: GML file for Cadastral Parcel.
- A.ES.SDGC. CP.02001.cadastralzoning.GML: GML file for Cadastral zone.

Contents of the ZIP file of addresses:

- A.ES. SDGC. AD. MD.. 02001.XML: metadata file
- A.ES.SDGC.AD.02001.cadastralparcel.GML: GML file for addresses.

Contents of the ZIP file of Buildings:

- A.ES. SDGC.BU. MD.. 02001.XML: metadata file
- A.ES.SDGC.BU.02001.building.GML: GML file of Buildings.
- A.ES.SDGC.BU.02001.buildingpart.GML: GML file of Buildings Parts.
- A.ES.SDGC.BU.02001.otherconstruction.GML: GML file of other constructions (pools).

## 6 Ejemplos of download data

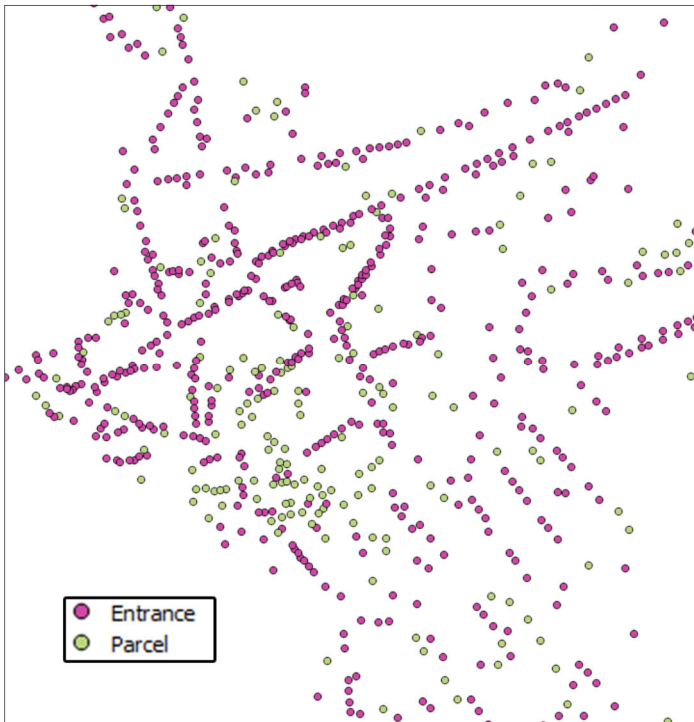
### Cadastral Parcels



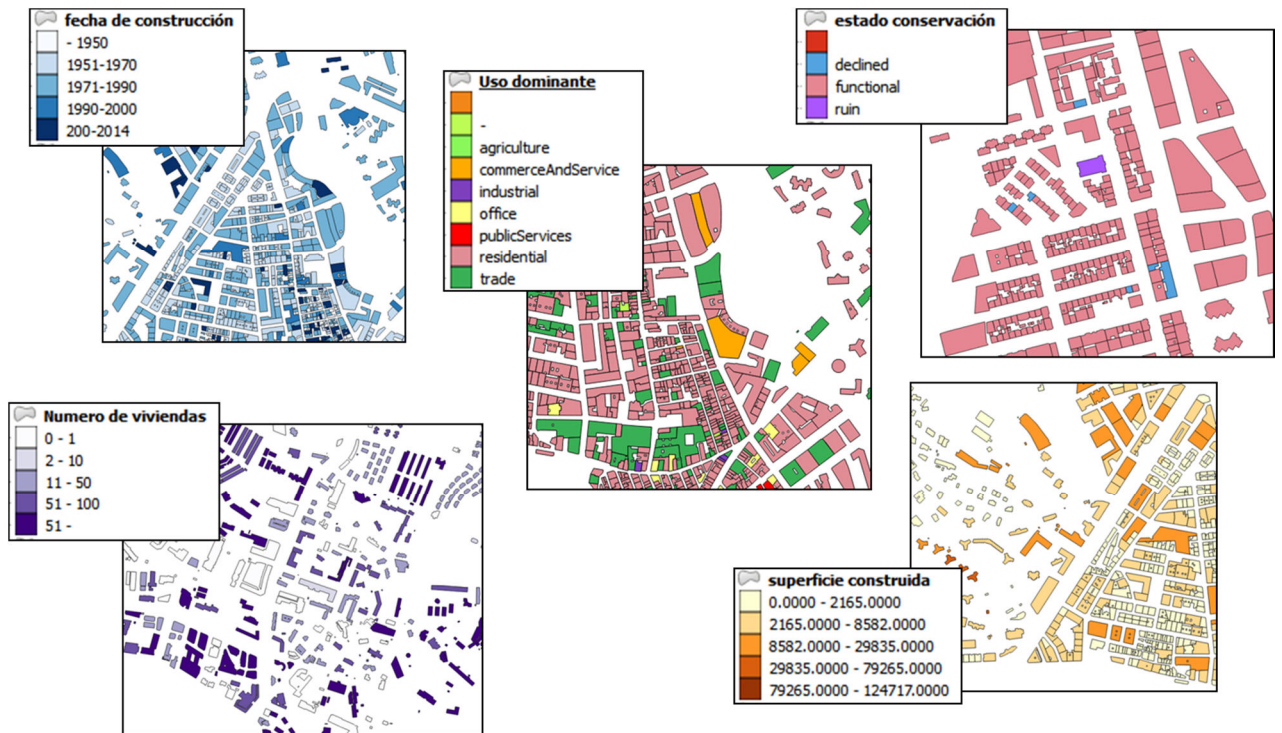
### Zones (Blocs and Poligons)



Addresses (thematic by georeferencing to the entrance or to the plot)

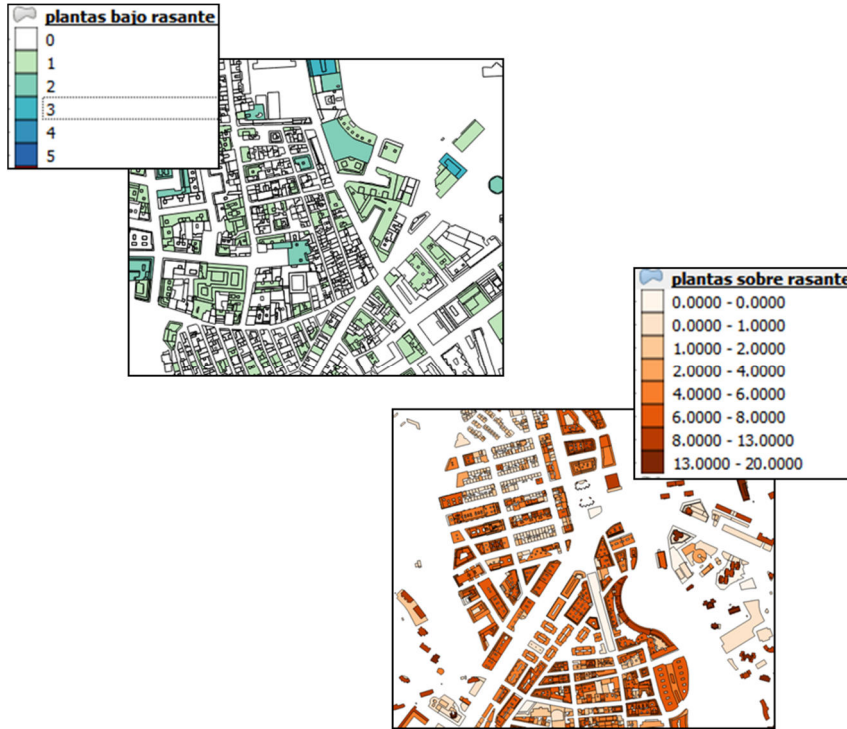


Buildings (thematics)





Building Parts (thematics)



Other constructions (open air pools)

