

Framework for Effective Land Administration

UN-GGIM EG LAM, New York, 29th May 2020

presented by:

Eva-Maria Unger, Kadaster International

Rohan Bennett, Kadaster International

based on documents from UN-GGIM and UN-GGIM EG LAM

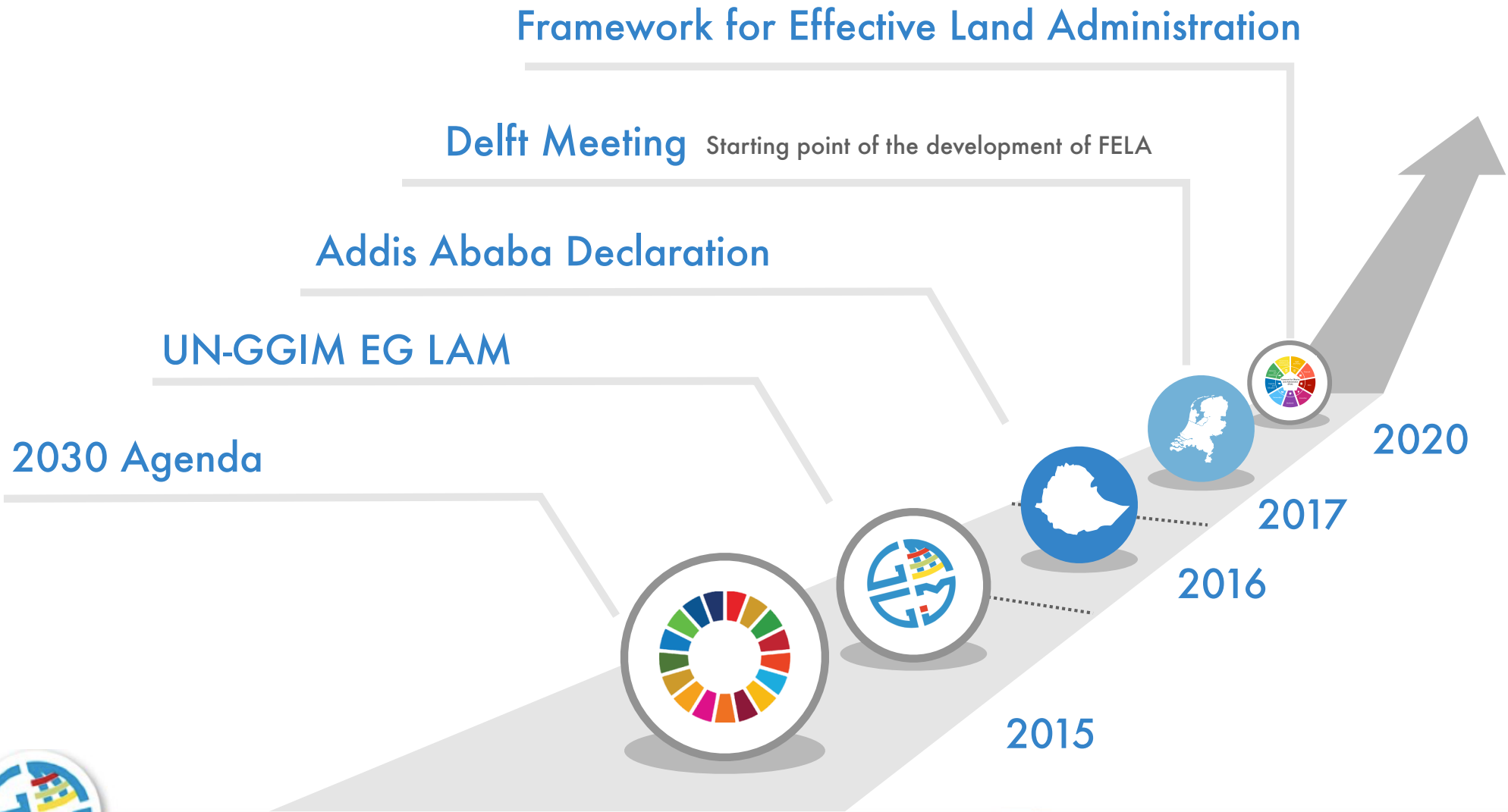
<http://ggim.un.org>



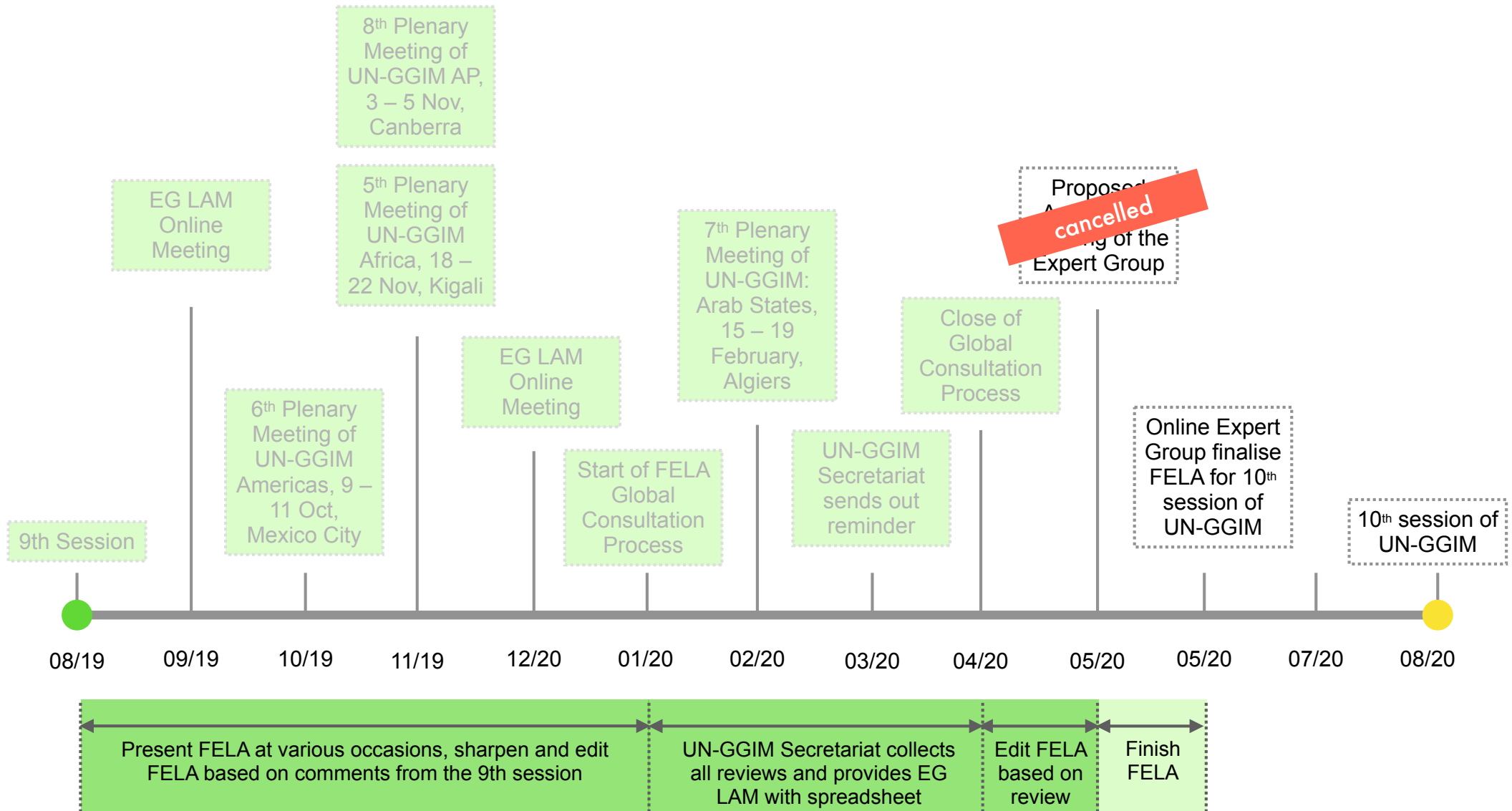
UN-GGIM

United Nations Committee of Experts on Global Geospatial Information Management

Framework for Effective Land Administration



Framework for Effective Land Administration



Framework for Effective Land Administration

Process of the review:

1/2



Framework for Effective Land Administration

Agreed ground rules

- All comments are reviewed and dealt with respectfully, and require explanatory note, regardless of whether suggested changes are incorporated into FELA
- It is not guaranteed that all suggested changes make it into FELA
- In general, at least two reviewers make the same or similar comment for a change to be made, although, this is not mandatory
- Generally, the aim is to arrive at consensus to make FELA as broad and as inclusive as possible
- Where comments are deemed outside-the-scope of FELA aims and content, these should be passed-up to the UN-GGIM Secretariat for response or decision



Framework for Effective Land Administration

Process of this review:

2/2

Responses to each comment

RT then went through the intended responses to each of 206 comments and agreed on a course of action for each, discussed, and agreed. At this point, those comments requiring UN-GGIM Secretariat support were identified.

Major Issues

RT met with UN-GGIM Secretariat Rep to discuss major issues. These were identified as:

- :: Use of 'Management' within the document generally;
- :: Structure of the document in terms;
- :: Inclusion of a 'forward facing' paragraph in the conclusion;
- :: Definition and scope of 'Effective Land Administration'

Final Version

Updated FELA sent back to UN-GGIM Secretariat. Editing spreadsheets stored. Process explanation recorded.

6

Track Changes

RT went through and actioned the intended responses, noting whether they had been fully implemented, partially implemented, or remained pending. These actions were implemented directly into a copy of the FELA Draft for Consultation - using 'Track Changes'.

7

8

New Version

Based on the discussion, the RT compiled 'edit' and 'clean' versions of the updated FELA. The 'clean' version involved 3x full reads by RT and UNGGIM Secretariat, and viewing by EG LAM Co-Chairs, with a view ensuring consistency across the entire document.

9

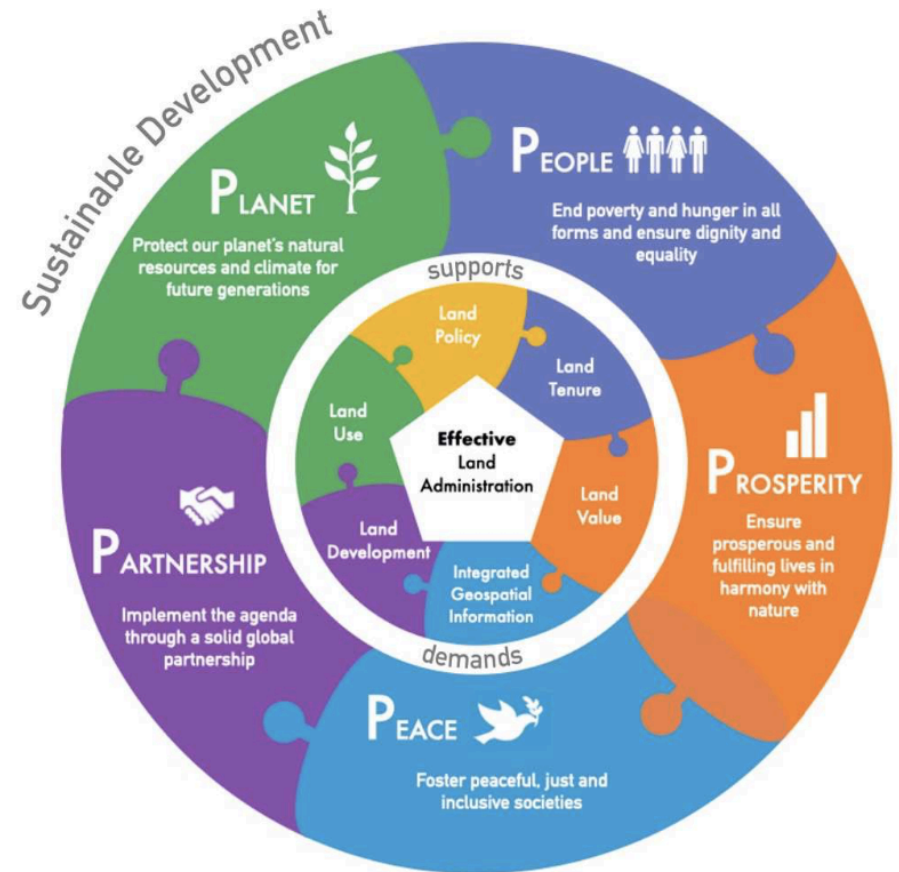
10



Framework for Effective Land Administration

Effective land administration caters to all people, and must:

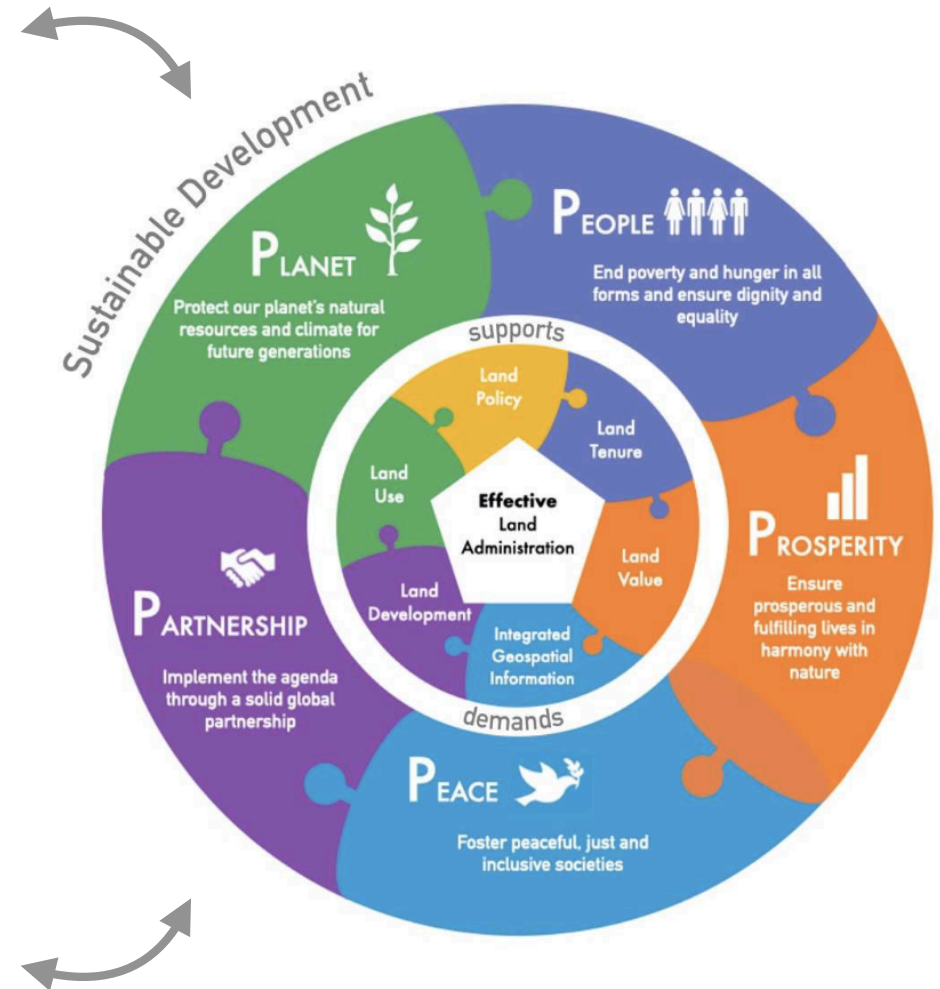
- 💡 Develop confidence and *trust*, promote *security, safety, peace* and *peace building*;
- 💡 Accelerate the proportion of population with *tenure security*;
- 💡 Allow *economic development* by supporting land value capture revenue systems that are equitable and transparent;
- 💡 Strengthen *multi-disciplinary* and *multi-sectoral participation* to achieve integrated geospatial information;
- 💡 Contribute to *smart* and *resilient rural* and *urban societies*, with equitable spatial/land use planning, and land development;
- 💡 Ensure *participatory* and *inclusive* land use and use planning;
- 💡 Promote the recognition of the *inherent rights of indigenous and vulnerable peoples* to their lands, territories and resources, and *recognise collective traditions, customs and customary tenures*, consistent with existing obligations under national and international law;
- 💡 Encourage *efficient, sustainable and fair land markets*, where appropriate, that take into account land tenure, value, use and land development aspects;
- 💡 Cater to *all* circumstances, situations and people – in times of *peace and prosperity*, in times of *stress and hardship* (including disaster and conflicts, forced migration and human displacement, poverty, food and water scarcity);
- 💡 Enable *partnership, bringing and building together knowledge, skills and experiences* on land tenure, land value, land use and land development; and
- 💡 Promote *preparedness and resilience* on climate change issues and support biodiversity, conservation and ecosystem sustainability.



Framework for Effective Land Administration

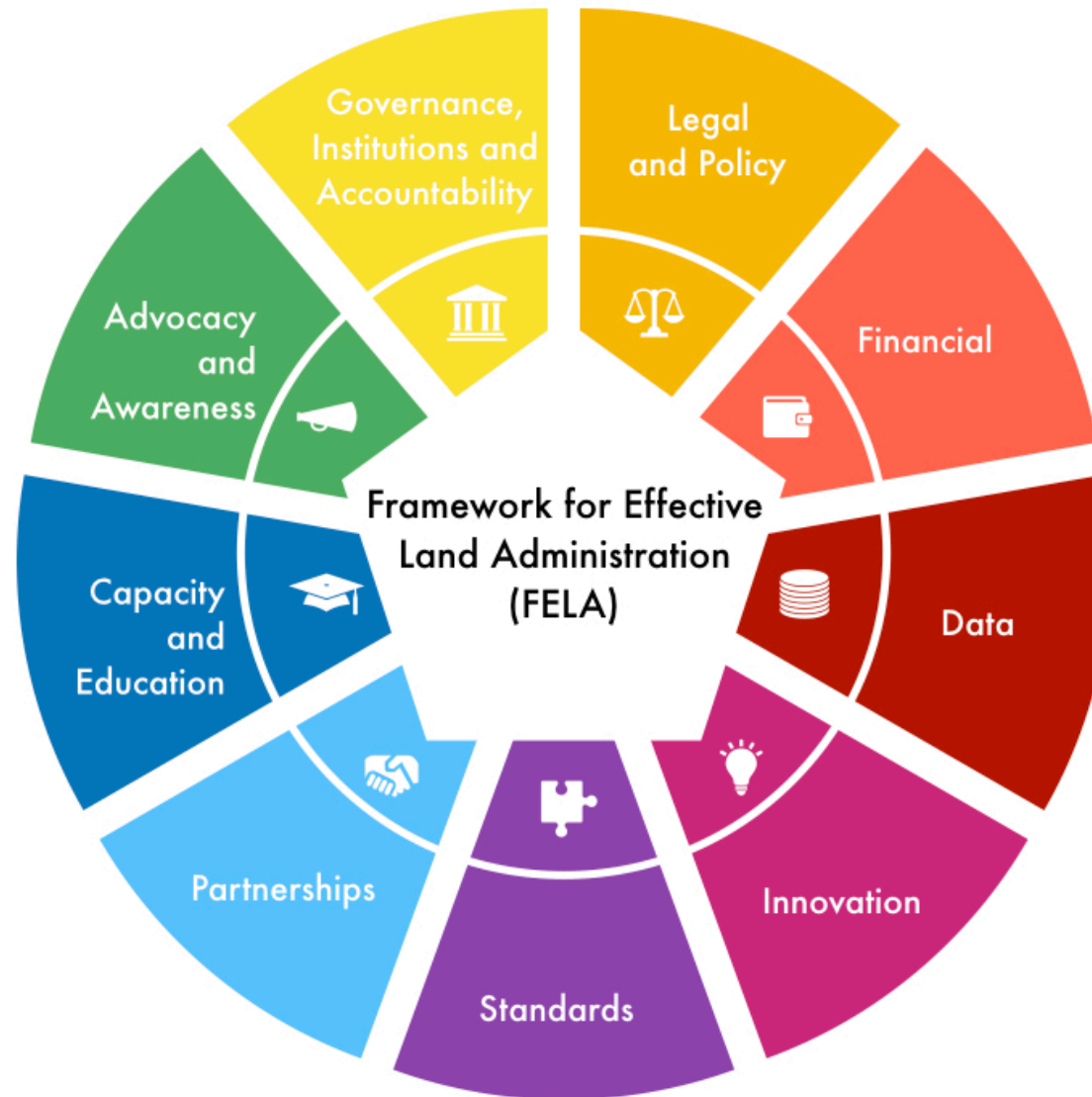
Effective land administration caters to all people, and must:

- 💡 Develop confidence and trust, promote security, safety, peace and peace building;
- 💡 Accelerate the proportion of population with tenure security;
- 💡 Allow economic development by supporting land value capture revenue systems that are equitable and transparent;
- 💡 Strengthen multi-disciplinary and multi-sectoral participation to achieve integrated geospatial information;
- 💡 Contribute to smart and resilient rural and urban societies, with equitable spatial/land use planning, and land development;
- 💡 Ensure participatory and inclusive land use and use planning;
- 💡 Promote the recognition of the inherent rights of indigenous and vulnerable peoples to their lands, territories and resources, and recognise collective traditions, customs and customary tenures, consistent with existing obligations under national and international law;
- 💡 Encourage efficient, sustainable and fair land markets, where appropriate, that take into account land tenure, value, use and land development aspects;
- 💡 Cater to all circumstances, situations and people – in times of peace and prosperity, in times of stress and hardship (including disaster and conflicts, forced migration and human displacement, poverty, food and water scarcity);
- 💡 Enable partnership, bringing and building together knowledge, skills and experiences on land tenure, land value, land use and land development; and
- 💡 Promote preparedness and resilience on climate change issues and support biodiversity, conservation and ecosystem sustainability.



Framework for Effective Land Administration

FELA with its nine pathways is an overarching policy guide and provides a reference for Member States when establishing, strengthening, co-ordinating, and monitoring its land administration nationally or sub-nationally.



FELA aligns directly to the overarching and strategic IGIF. FELA implements the IGIF for the land sector. All pathways are linked and overlap and address a specific objective.



Framework for Effective Land Administration

Each pathway is built as:

Pathway IX: Advocacy and Awareness

Pathway link to SDGs

Advocacy and awareness are an essential element of any contemporary land administration initiative, program, project and resultant system. Land administration cannot succeed without stakeholder acceptance and support across society. Advocacy and awareness activities can help to create and maintain this backing. All prominent global land policy initiatives mention the importance of stakeholder identification, development of engagement strategies, and actively implementing and evaluating communication initiatives. This includes the SDGs and VGGTs.

Pathway link to IGIF

For IGIF, advocacy and awareness are recognized as a stand-alone strategic pathway. The strategic pathway recognizes that successful implementation of integrated geospatial information management relies on recognition and active participation from stakeholders and the general community. IGIF calls for engagement activities to be embedded and ongoing through the lifecycle of creation and implementation, in order to enhance the overall design and uptake of integrated geospatial information management.

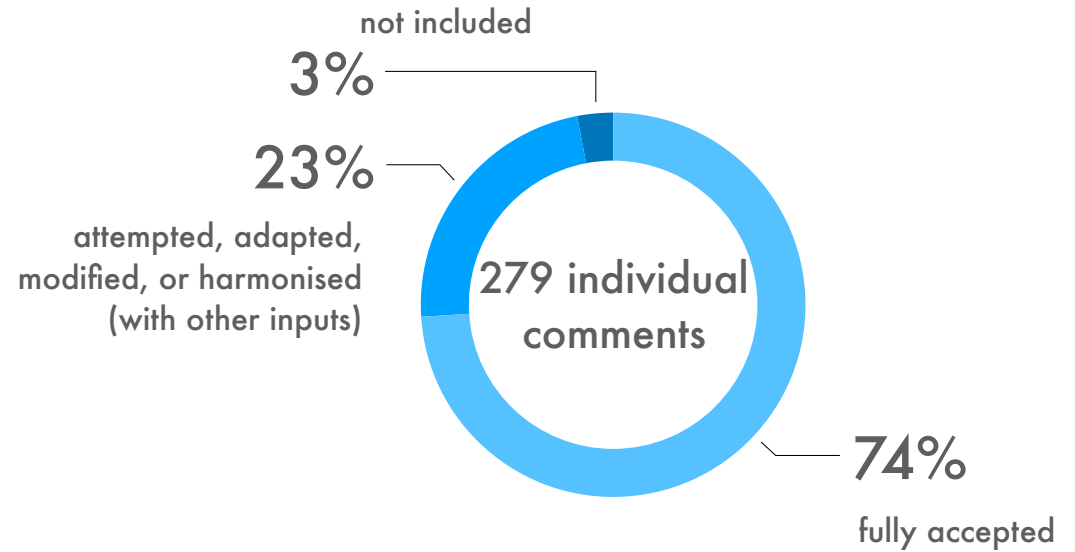
Pathway in FELA

Meaningful engagement with all land stakeholders is integral for the implementation of an effective land administration. This includes actively undertaking stakeholder identification, planning and execution of engagement, undertaking integrated communication strategies, and monitoring and evaluation of those activities. Depending on the scale of system or project, this might include undertaking these tasks at community, national, regional, and international level.

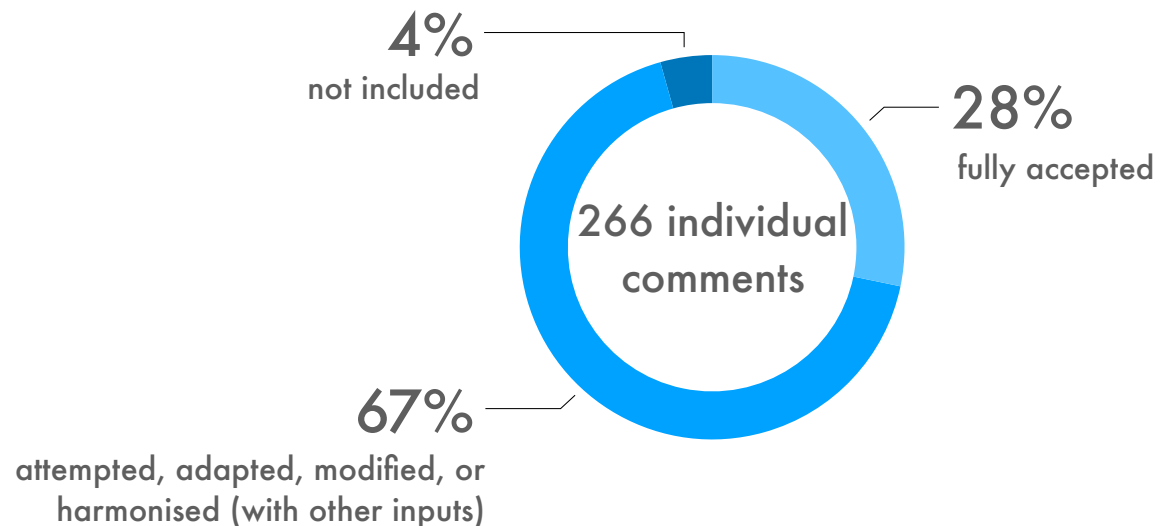


Framework for Effective Land Administration

1st FELA Consultation

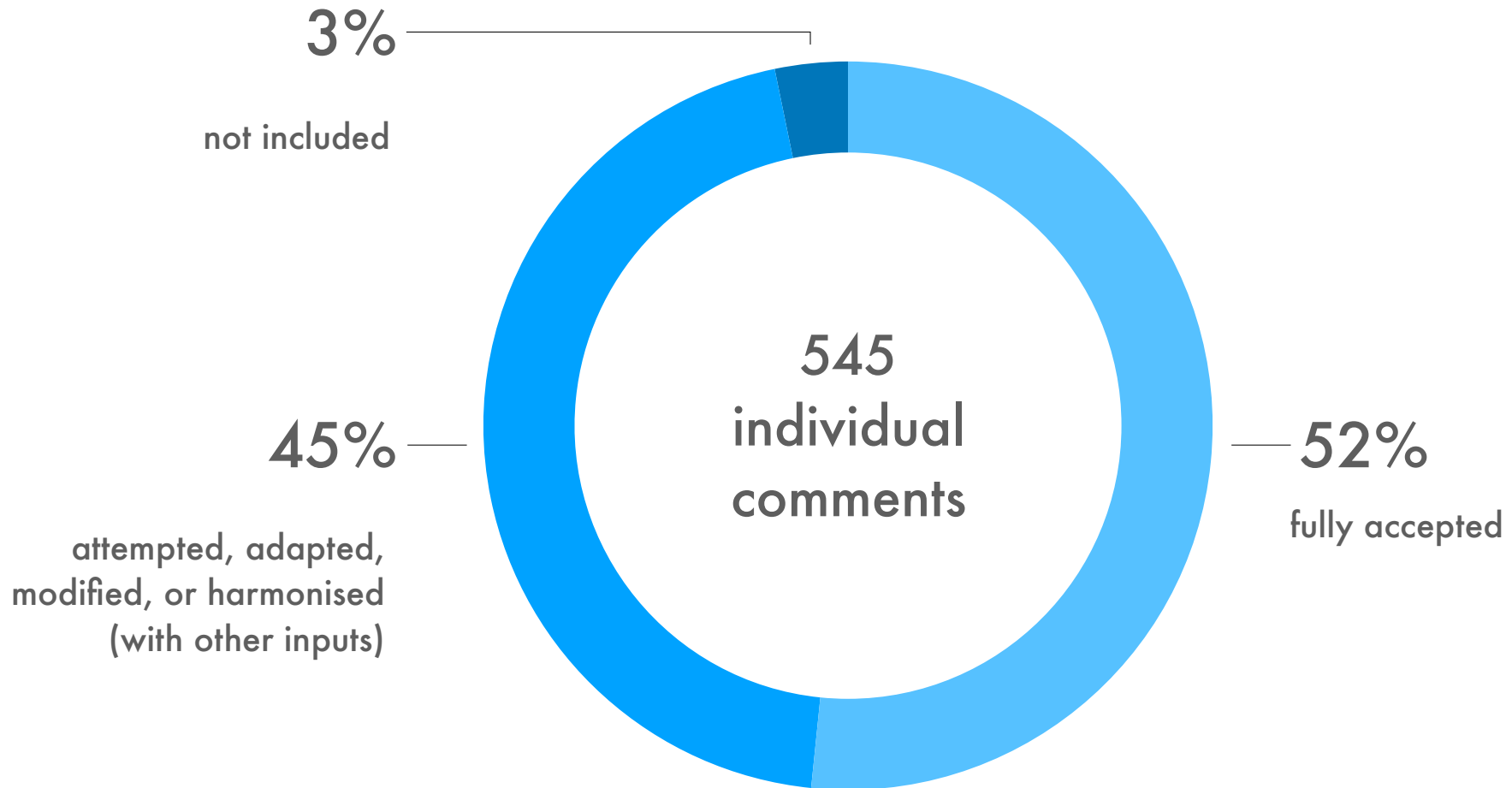


2nd FELA Consultation



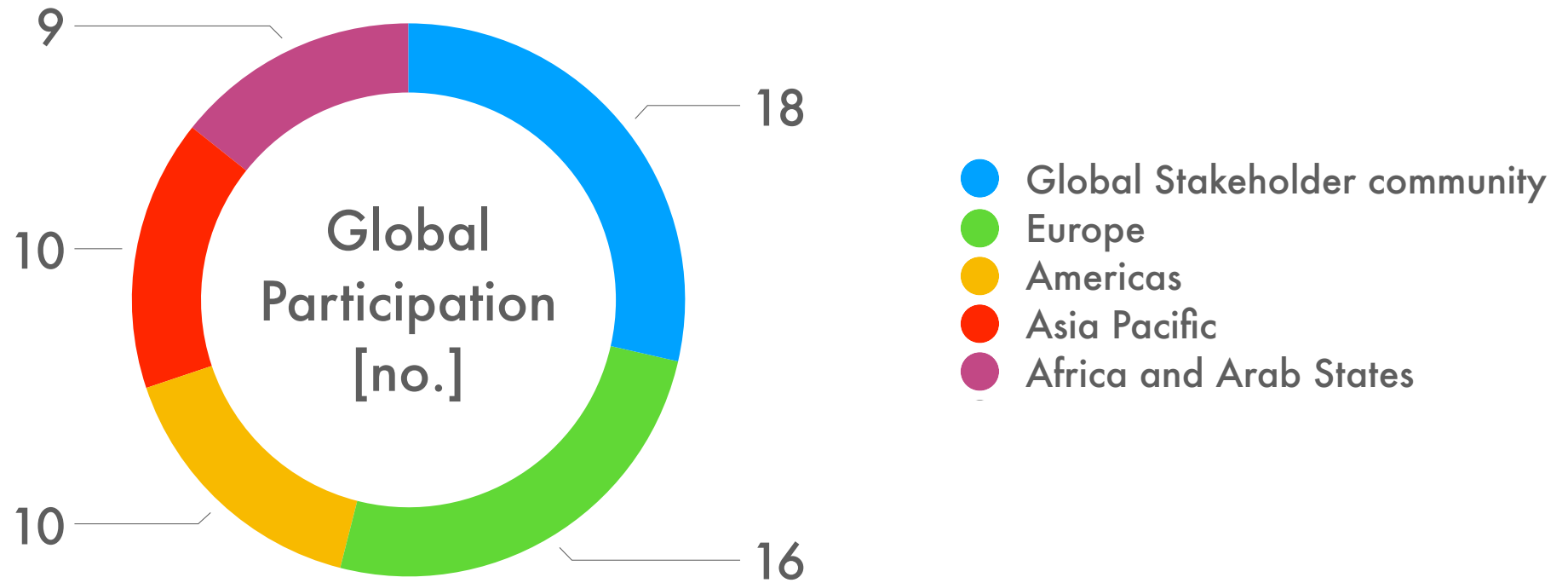
Framework for Effective Land Administration

FELA Global Consolation





Framework for Effective Land Administration

FELA Global Consolation



Framework for Effective Land Administration

Going forward, FELA will:

-  Leverage the IGIF Implementation Guide as a reference resource that provides information for governments to design, plan, implement and maintain effective land administration in their country in such a way that positive transformational change are enabled, visible and sustainable.
-  The IGIF Implementation Guide provides the specific guidance, options and actions for each of the nine strategic pathways, and equally, for FELA and its nine pathways. This will guide the user through the approach, content, rationale, options, considerations, and principles that align with actions.

